

**High Quality, Slow Scan Legacy System Replacements**

The 29LP1901A51UN/3 Series of 19.0" LCD monitors has been designed primarily for Slow Scan Legacy Systems as replacements for 20"/21" CRT monitors. They utilize a modern SXGA TFT (1280 x 1024 pixels) panel and a KME-designed Analog-Digital interface board. All elements, including a toughened glass protection screen, have been packaged in a compact metal housing. (Dimensions are compatible with previous 18.1" series).

By special development of our own Signal Recognition and Scaling software, and access to an extensive library of older signal timings gained from 30+ years of CRT monitor manufacturing, KME has created a Multiscan ("Universal") flat panel monitor with unique 15kHz to 80kHz display capabilities. Some common Slow Scan Signal timings are factory pre-set. (see table on next page) New ones may be added on request. Other signals, which are close to those listed, will give a display but some adjustment may be necessary for full screen performance. The final settings can be easily stored for future use.

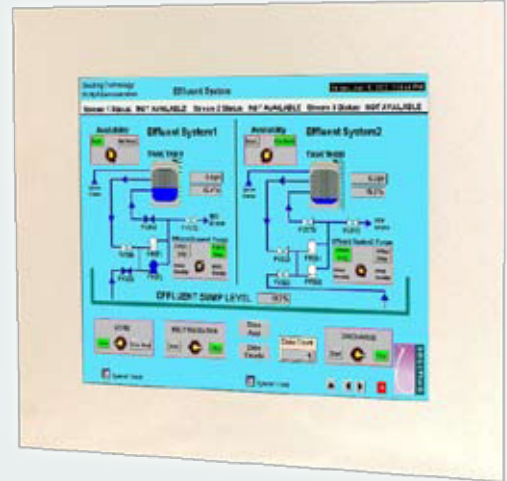
**Features**

- Accepts signal types CGA, EGA & all VESA standards up to SXGA. TTL, analog & interlaced signals accepted
- KME have developed a deep dimming solution for the slow scan range which provides smooth consistent dimming 100% to 0%
- All monitors have BNC, 9-D & 15-D connectors
- The LCD monitor has been designed with solidity, being housed in a compact metal construction with a toughened glass protection screen

Slow Scan Support - examples

H. kHz	V. Hz	Pixels	H. kHz	V. Hz	Pixels
15.625	50	714 * 288	15.63	50	560 * 275
15.63	60	808 * 238	15.72	60	564 * 240
15.72	60	508 * 240	15.72	60	604 * 240
15.72	60	640 * 200	16.10	50	564 * 304
16.276	70	640 * 220	16.79	70	577 * 215
17.85	50	508 * 338	21.83	60	640 * 350
20.65	50	640 * 384	24.78	60	640 * 384

*19" Slow Scan LCD Panel Mount Monitor  
29LP1901A51UN-3*



Specifications: see next page

